

ROLIC
TRUST YOUR INVESTMENT

ROLIC
TRUST YOUR INVESTMENT

 <p>4224 sq. ft. GREENTREE RD 3</p>	 <p>4257 sq. ft. SCIBERRAS RD 27</p>
 <p>4252 sq. ft. SCIBERRAS RD 29</p>	



3 GREENTREE ROAD

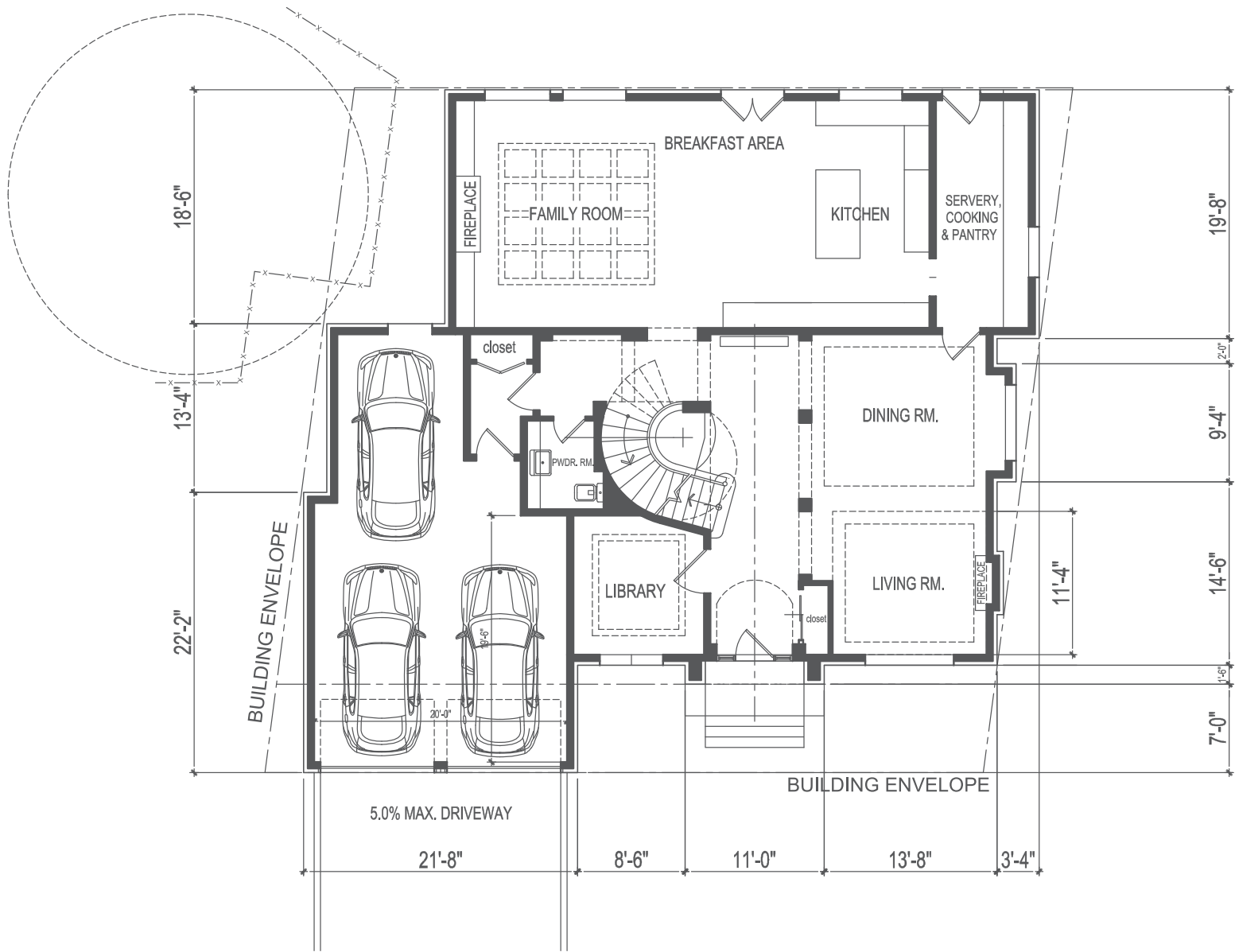
Ground & Second Floor: 4234 sq. ft.
Basement: 1933 sq. ft.

Make the prestige area of Unionville your home. This 2-storey, home located on Greentree Road, just north of the 407, is designed for a growing family. Devised with an eye to detail, this will truly be your dream home. Designed with you in mind, this home features four (4) bedrooms, five (5) bathrooms, open concept living and dining room, and a gourmet kitchen.



GROUND FLOOR

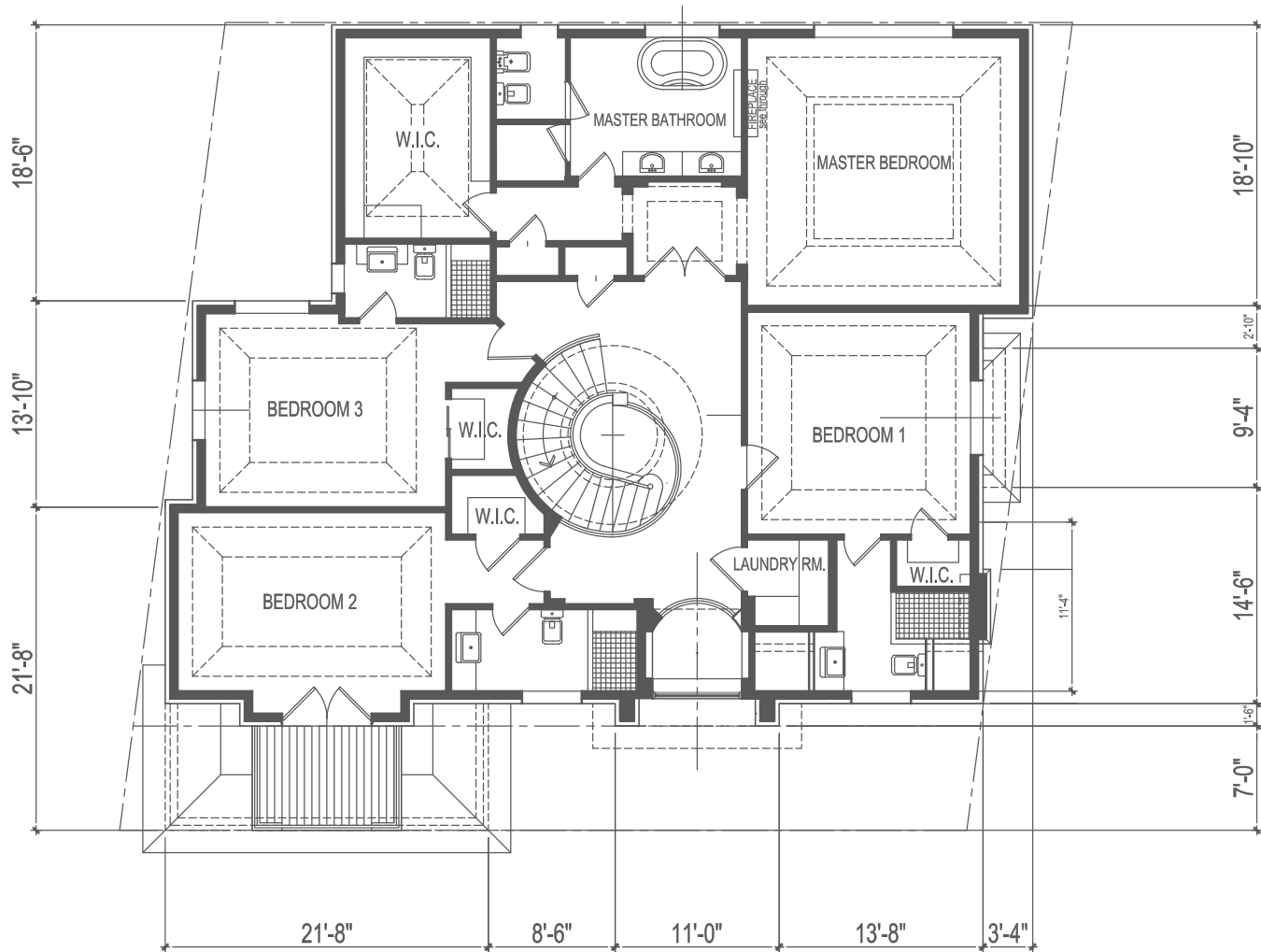
(scale 1/8" = 1'-0")



Livable Area: 1933 sq. ft.

SECOND FLOOR

(scale 1/8" = 1'-0")



Livable Area: 2291 sq. ft.

- Combined living and dinning room with fireplace
- Large library can be used as an office
- Gourmet kitchen with large island, breakfast area and separate servery/pantry
- Family room is combined with the kitchen featuring a fireplace and walk-out to backyard
- Powder room for guests
- Three (3) car garage with entrance to main floor
- Spiral staircase
- Four (4) bedrooms
- Each room has its own ensuite
- All rooms feature walk-in closets
- Master bedroom has see through fireplace from the ensuite to the bedroom
- Second bedroom features a balcony overlooking Greentree Road
- Laundry room



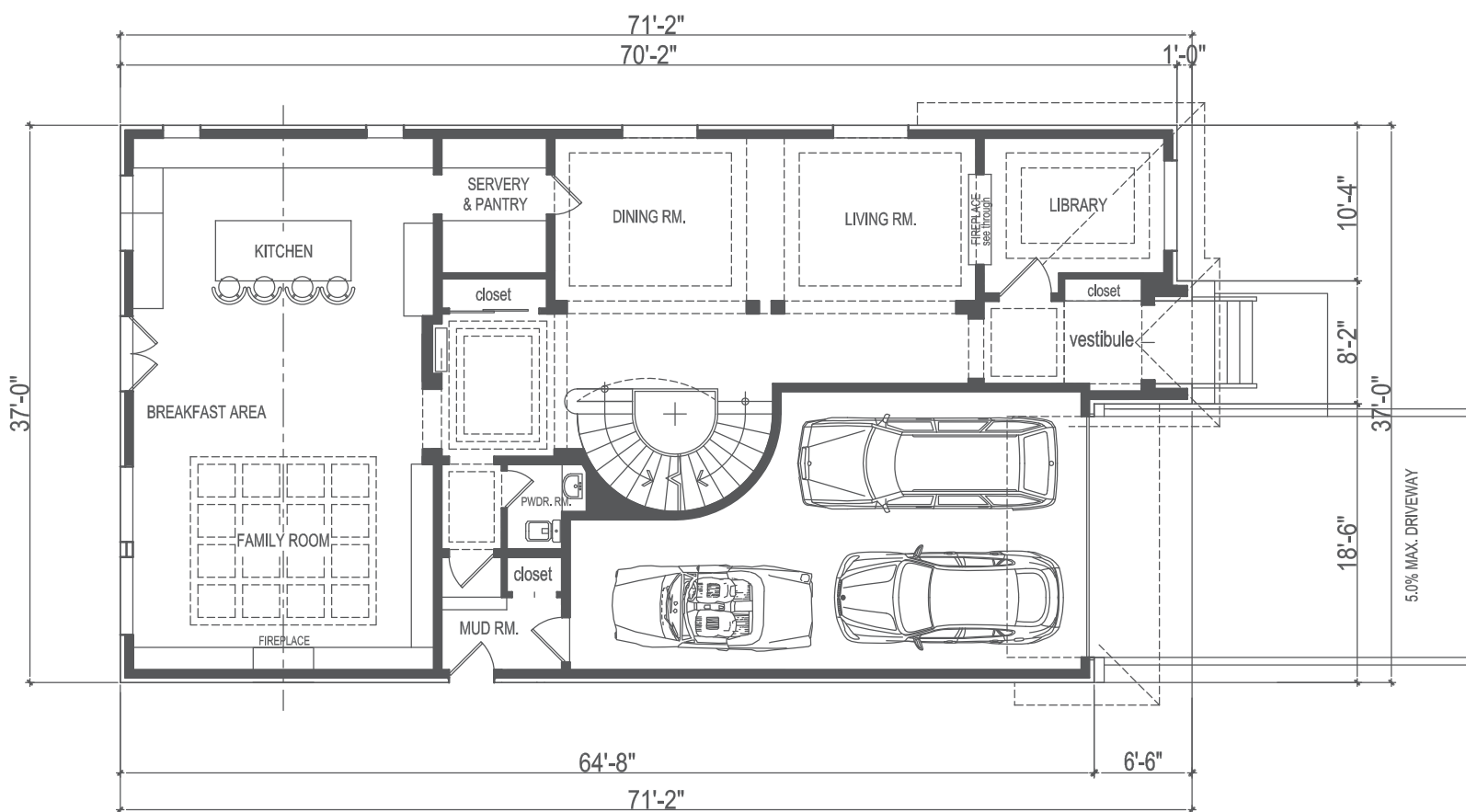
27 SCIBERRAS ROAD

Ground & Second Floor: 4257 sq. ft.
Basement: 1906 sq. ft.

Detached, 2-storey home located in the heart of Markham is minutes from the bright lights of its downtown. Simple luxury never looked so good in this ten (10) room home. Featuring crown moulding, hardwood flooring, and pot lights this home has every crisp detail you are looking for.

GROUND FLOOR

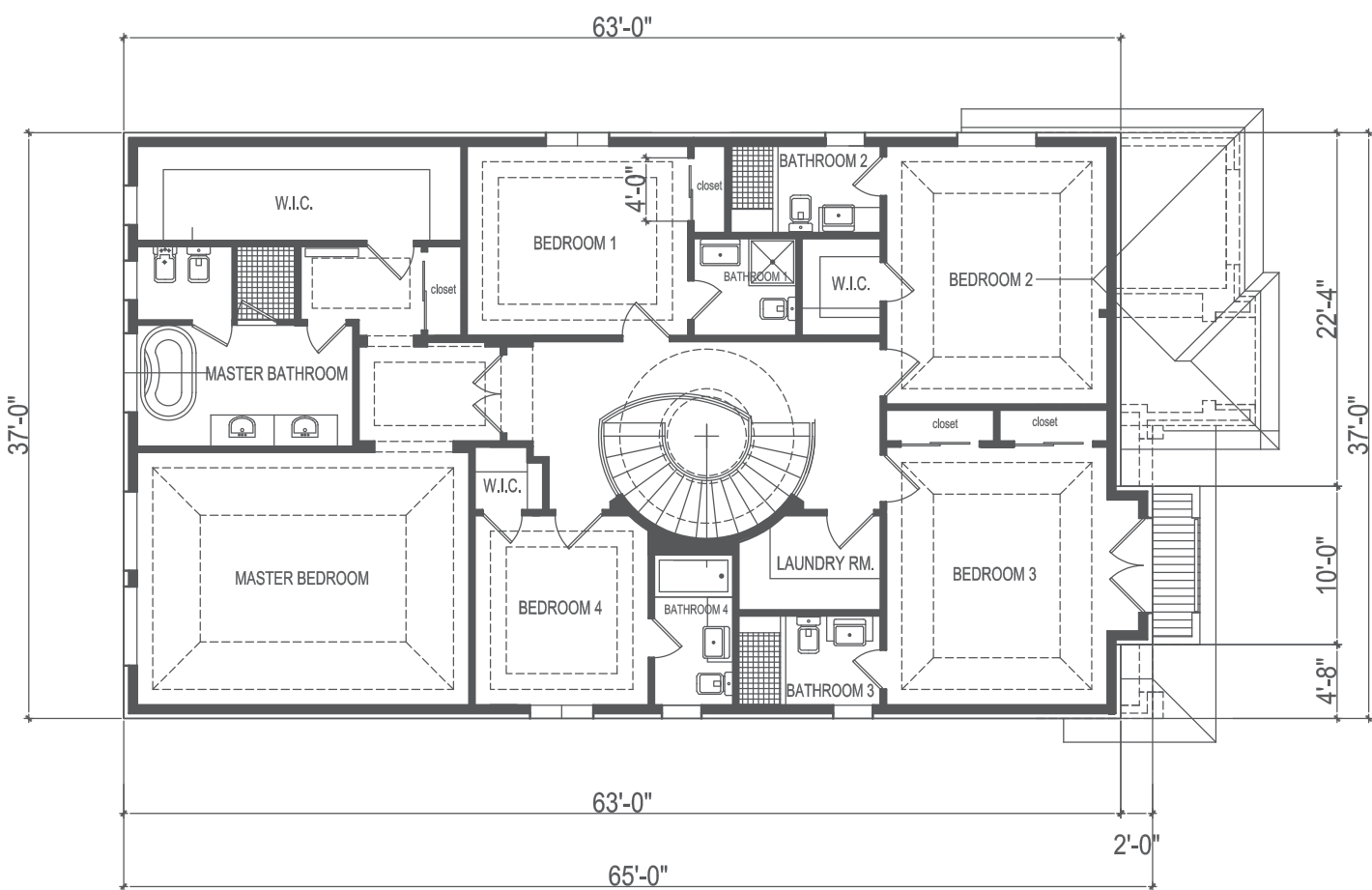
(scale 1/8"= 1'-0")



Livable Area: 1906 sq. ft.

SECOND FLOOR

(scale 1/8"= 1'-0")



Livable Area: 2351 sq. ft.

- Combined, open concept living and dining room
- See through fireplace shared by living room and library
- Large library can be used as an office
- Servery connects dining room and kitchen

- Eat-in kitchen features a breakfast area and is combined with family room
- Side entrance to house from mud room
- Powder room off of main hallway
- Three (3) car garage

- Hardwood, spiral staircase
- Five (5) bedrooms
- Master bedroom features walk-in closet and six (6) piece ensuite

- Four (4) bedrooms feature three (3) piece ensuite
- A balcony in the third bedroom overlooks front of house
- Large laundry room



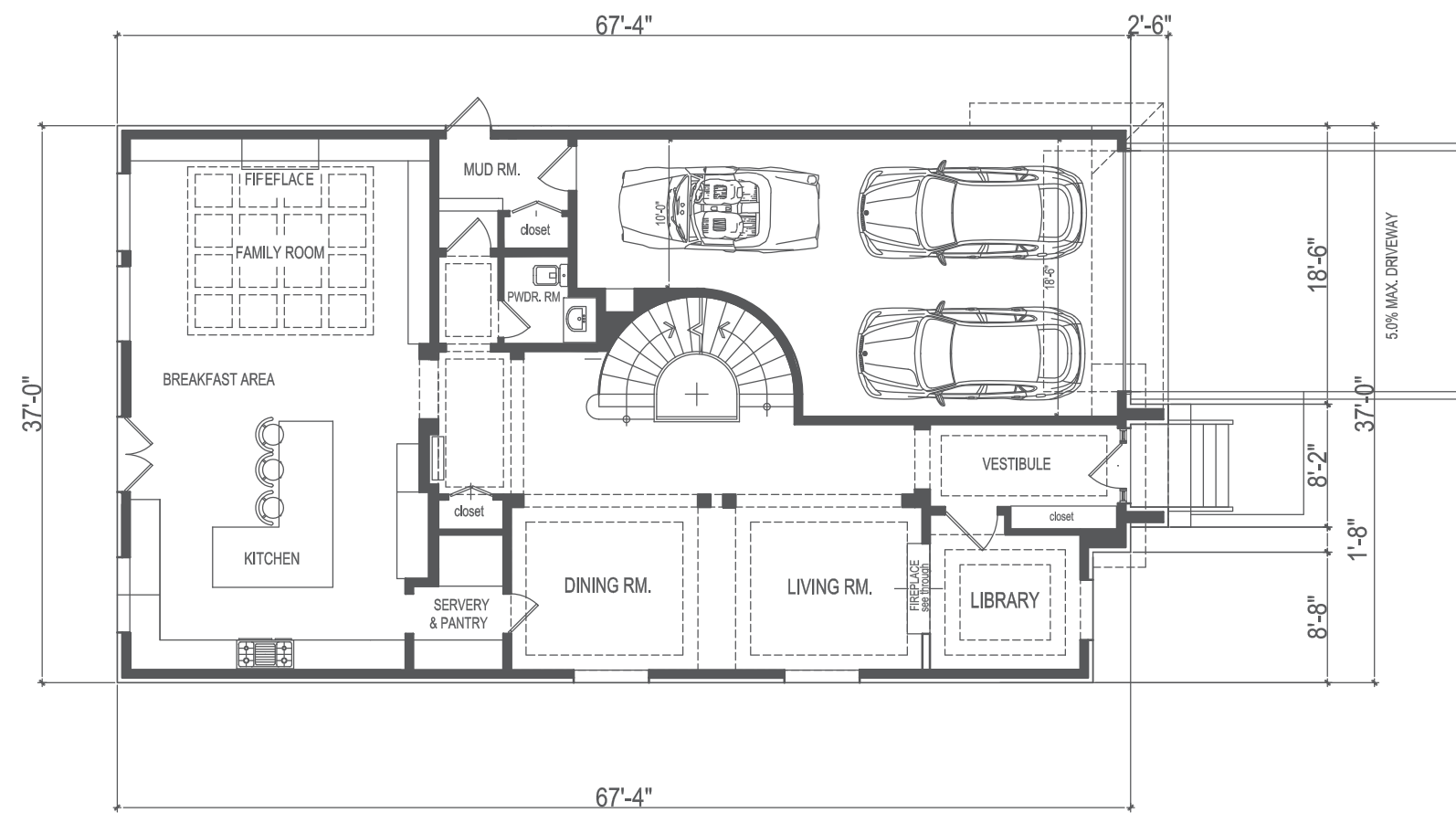
29 SCIBERRAS ROAD

Ground & Second Floor: 4252 sq. ft.
Basement: 1864 sq. ft.

Enjoy relaxing in an oasis every day. This detached 2-storey home has a master bedroom designed to make you feel like you are on vacation every day of the week. Conveniently located minutes from highway 7 and other amenities.

GROUND FLOOR

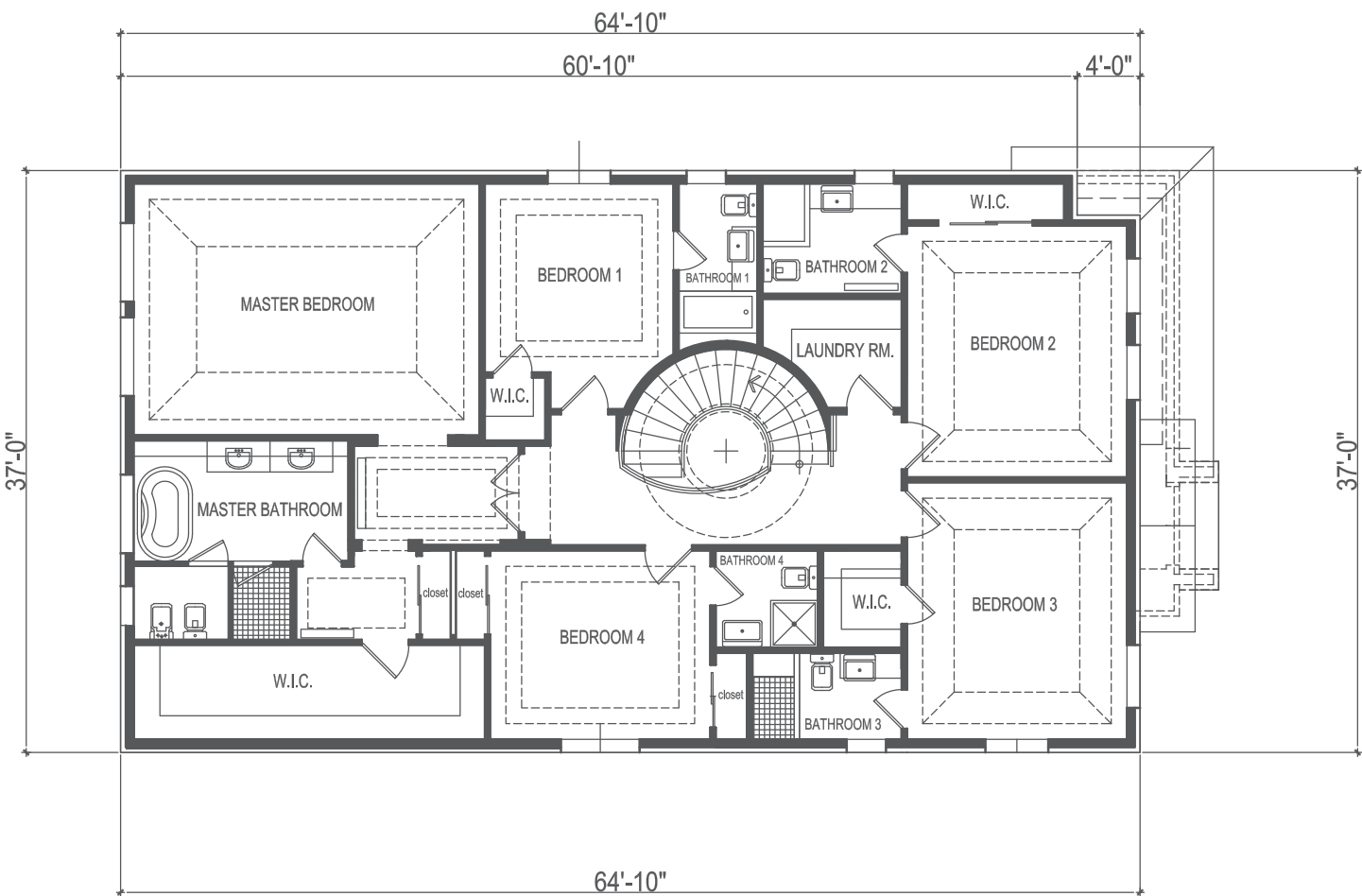
(scale 1/8"= 1'-0")



Livable Area: 1864 sq. ft.

SECOND FLOOR

(scale 1/8"= 1'-0")



Livable Area: 2388 sq. ft.

- Library off of main entrance vestibule
- A see through fireplace is shared by the library and living room
- Open concept, combined living and dining room
- Server/pantry connects the dining room to the kitchen
- Gourmet kitchen features an L shaped island and breakfast area
- Combined kitchen and family room features a fireplace
- Side entrance through mud room
- Two (2) piece powder room located near spiral staircase
- Three (3) car garage

- Five (5) bedrooms
- Five (5) bathrooms
- Master bedroom has large walk-in closet and 6 piece ensuite
- Laundry room conveniently located on the second floor
- Ensuite and walk-in closet in three of the bedrooms
- His and her closet in fourth bedroom



INTERIOR

Feast your eyes on unique elements in every corner of the home. The living room fireplace is a work of art with contemporary tiling. Intricate crown moulding throughout the main floor and bedrooms adds appeal to every square inch of the home. Hardwood flooring throughout creates a seamless connection between rooms. Natural lighting throughout the house from oversized windows.

- Granite counter tops in the kitchen with custom built cabinets for extra storage
- Built-in entertainment unit in the family room
- Pot lights in the kitchen and family room
- Soaker tub and separate shower in master bathroom
- Kitchen island for extra prep space
- Circular skylight on spiral staircase creates natural lighting



MAKE IT YOUR DREAM HOME

Homes built for lasting memories, Rolic Investment Group, creates innovative, luxurious homes for serene beauty at every level, creates innovative, luxurious homes for serene beauty at every level.